

DISEASE CONTROL IN WINTER WHEAT

Appropriate variety selection and adjusting drill dates can lay a solid foundation in reducing the requirement for fungicide chemistry to prevent and eradicate disease in winter wheat. As farmers and agronomists navigate the 2025 season, Niab supports them in making the best, evidence-based decisions. Pathogen diagnostic and disease surveillance tools and independent trials data evaluating both varieties and fungicides are backed up by weekly agronomic updates from our Regional Agronomists, providing guidance as the season progresses.

Start with the basics: variety choice

Traditionally, higher yielding wheat varieties have been those that produced the largest response to fungicides. But recent varieties are breaking the mould in that they yield well and offer strong disease resistance.

Lay the foundations: drill wisely

Sowing date affects disease pressure and response to fungicides. By sowing varieties with stronger disease resistance later in the autumn, there may be considerable scope to reduce the risk of damaging Septoria epidemics in winter wheat.

Fungicide planning

Knowledge of the potential power of an active ingredient together with its optimal use helps growers and agronomists gauge the potential return on their fungicide programme and balances the need to control disease with the need to protect chemistry from fungicide resistance.

Current AHDB Recommended List varieties – a guide to responsiveness (based on UK AHDB Recommended List 2025/26)

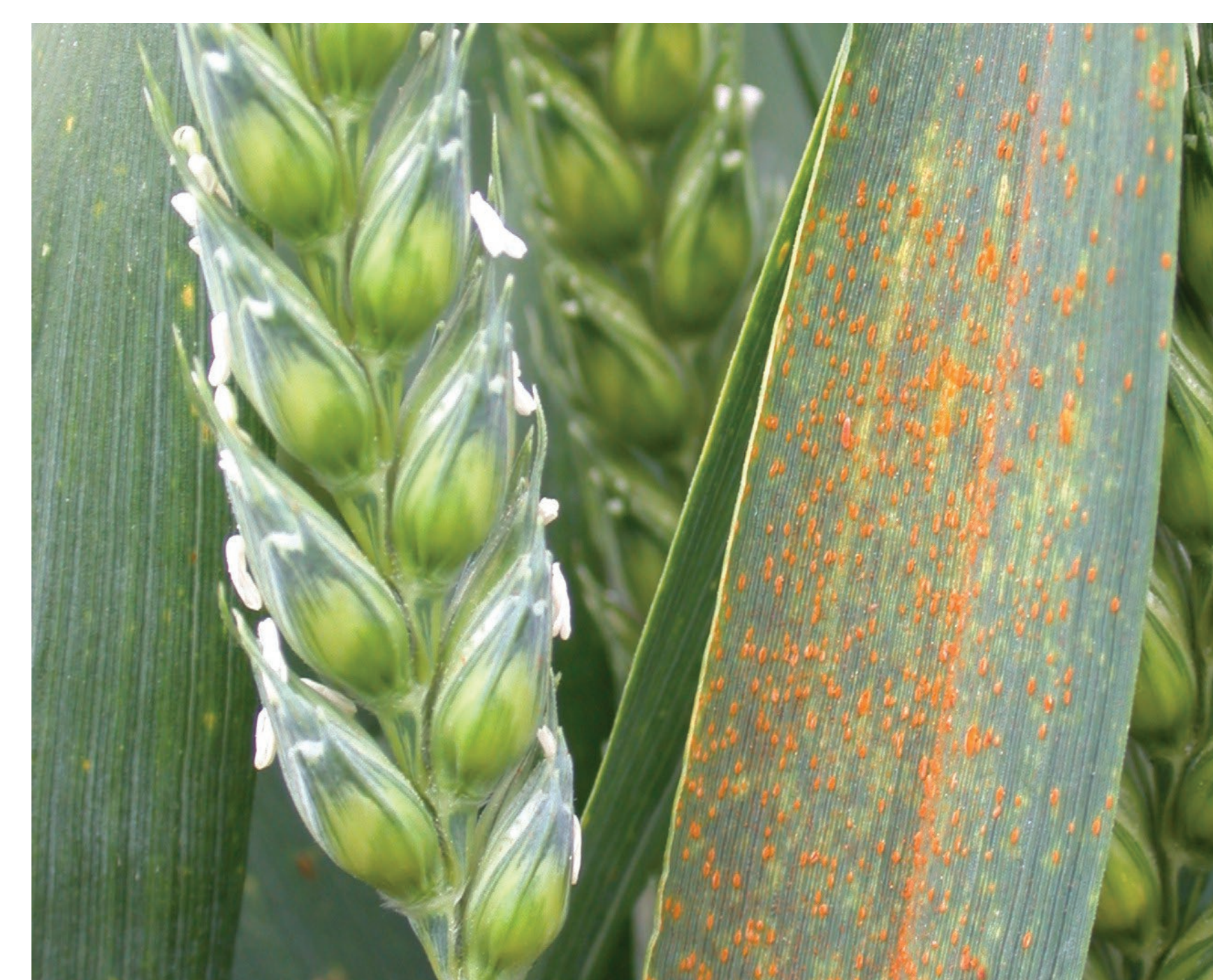
Response	Variety	Mean 3-year yield response (t/ha)
Very Low	RGT Goldfinch	1.54
	Diamond	1.65
	Mayflower	1.98
	KWS Vibe	1.99
Low	KWS Extase	2.28
	Almara	2.38
	LG Astronomer	2.38
	RGT Illustrious	2.43
	KWS Palladium	2.46
	KWS Ultimatum	2.48
Moderate	KWS Dawsum	2.57
	SY Cheer	2.57
	Bamford	2.64
	LG Typhoon	2.66
	KWS Arnie	2.72
	Blackstone	2.79
	Graham	2.97
	KWS Solitaire	3.06
	LG Skyscraper	3.09
	RGT Bairstow	3.09
	KWS Zealum	3.22
Moderate to High	LG Beowulf	3.23
	Champion	3.43
	RGT Hexton	3.62
High	Gleam	3.71
	Crusoe	3.73
	Skyfall	4.17
	SY Insitor	4.22
	KWS Zyatt	4.35



Septoria



Yellow rust



Brown rust

